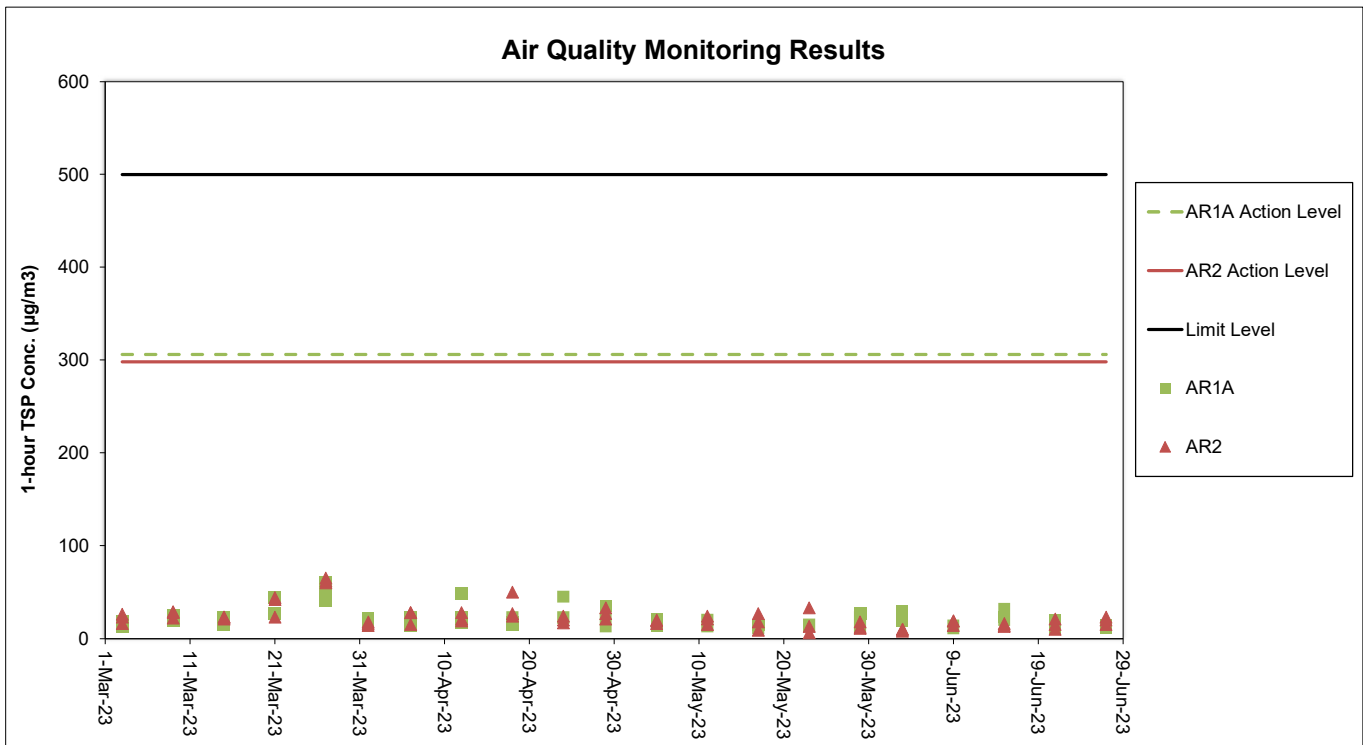


Appendix C. Monitoring Results

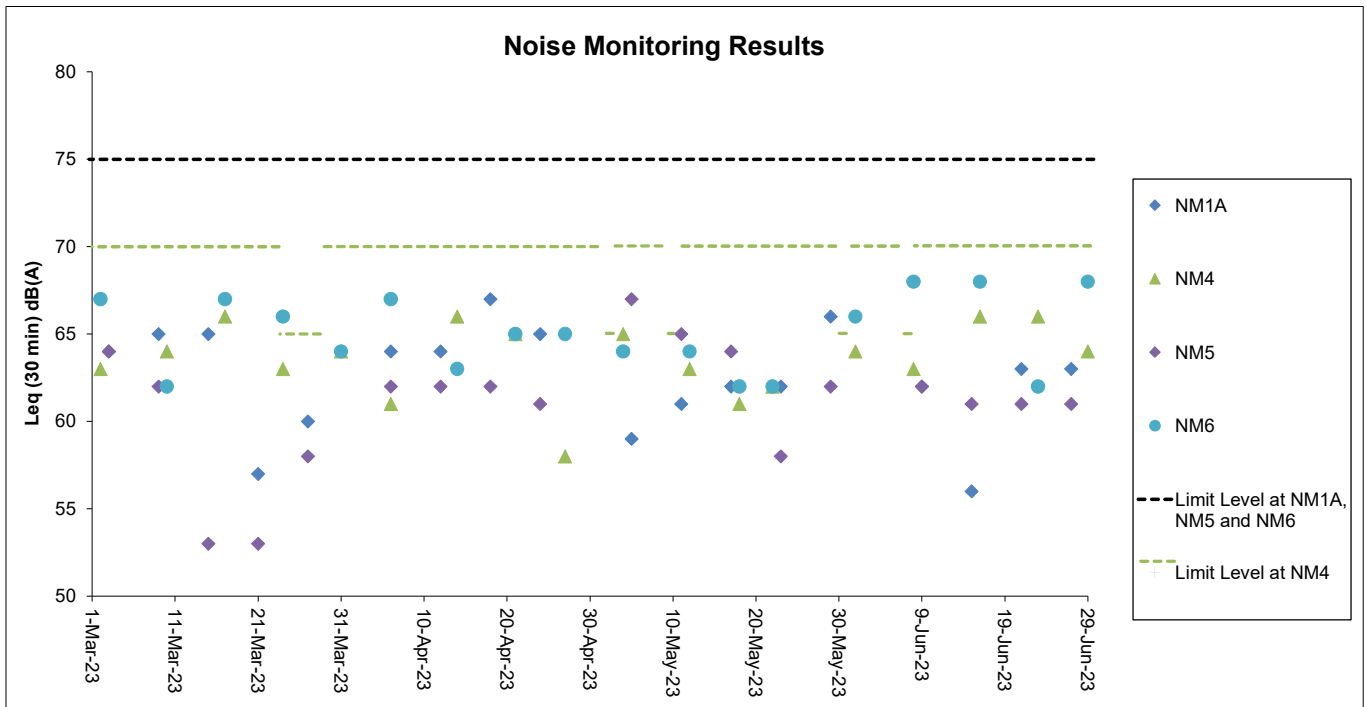
Air Quality Monitoring Results



Notes:

1. The key activities of the Project carried out in the reporting period included reclamation works and land-based works. Works in the reclamation areas included seawall construction, filling and land-based ground improvement works, together with runway, taxiways, concourse and associated works. Land-based works on existing airport island involved mainly airfield works, Terminal 2 expansion works, modification and tunnel work for Automated People Mover (APM) and Baggage Handling System (BHS), and preparation work for utilities, with activities include road and drainage works, cable ducting, demolition, piling, and excavation works.
2. General weather condition during monitoring ranged from sunny to rainy. Detailed meteorological conditions can be referred to Table 2.3 of this Report and corresponding Monthly EM&A Reports.
3. QA/ QC requirements as stipulated in the EM&A Manual were carried out during measurement.

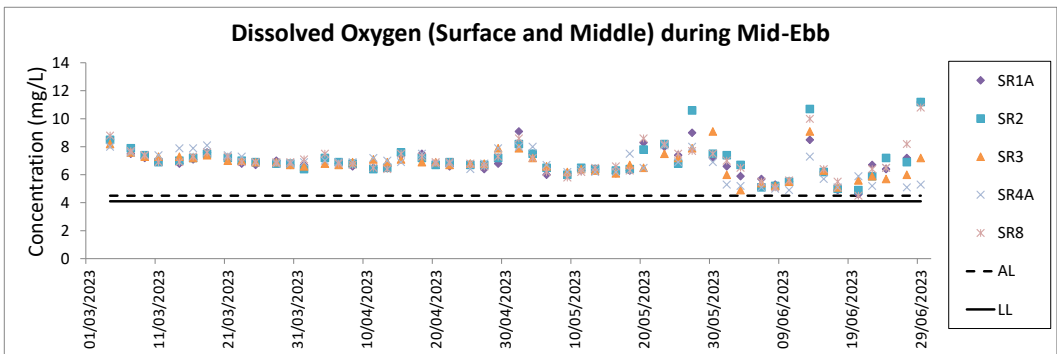
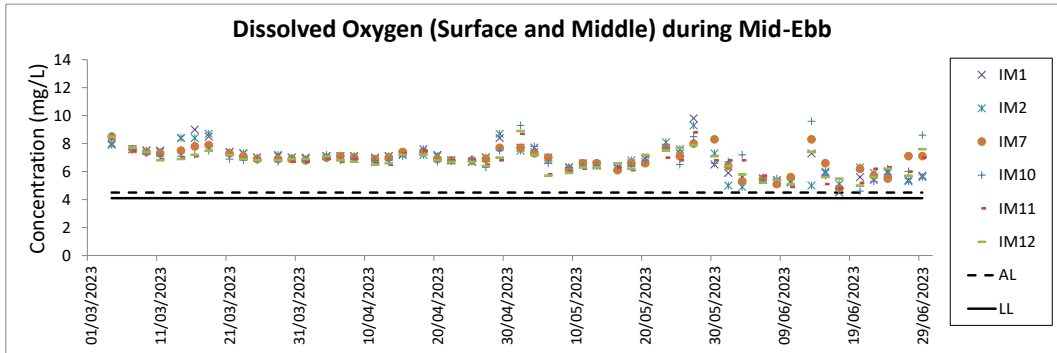
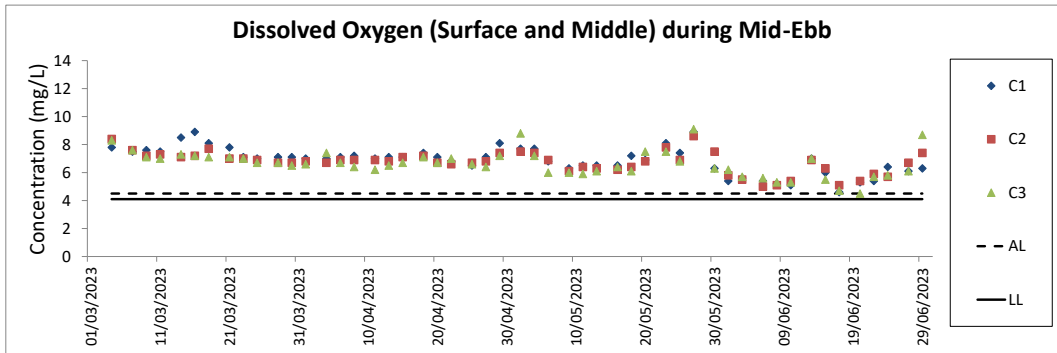
Noise Monitoring Results



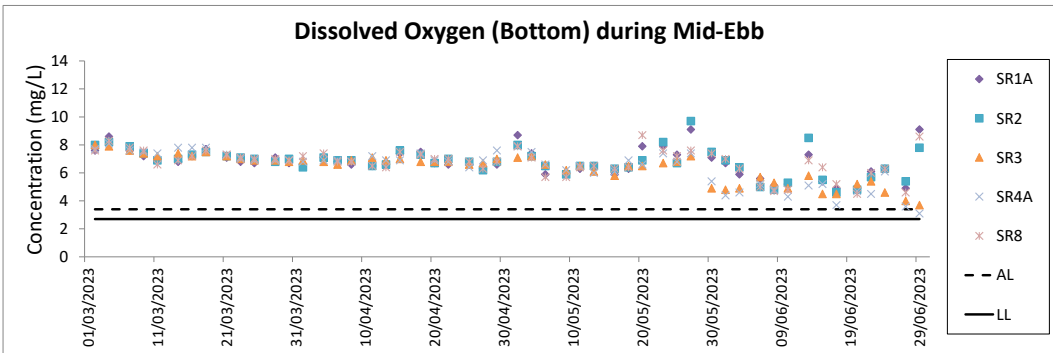
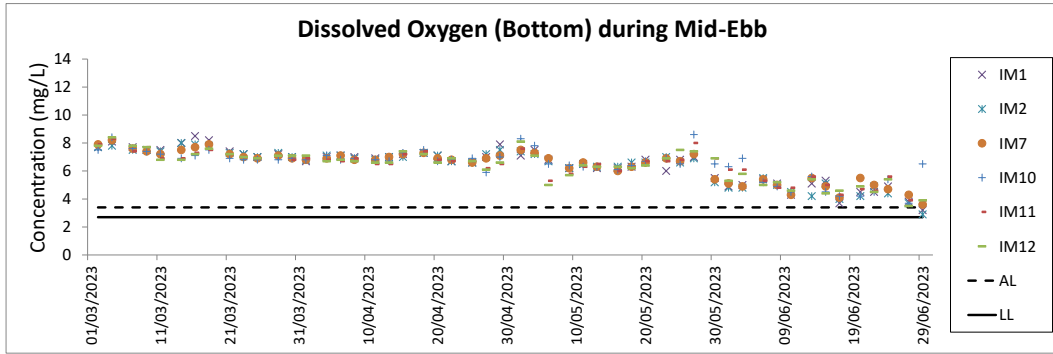
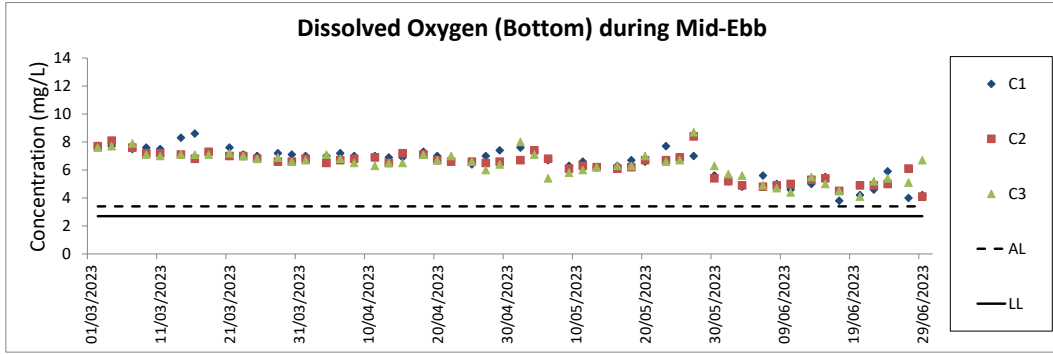
Notes:

1. The Limit Level is reduced to 70dB(A) for school and 65dB(A) during school examination period at NM4. School examination took place from 23 to 29 March, 2 to 3, 9 to 10, 30 to 31 May, and 7 to 8 June during this reporting period.
2. The key activities of the Project carried out in the reporting period included reclamation works and land-based works. Works in the reclamation areas included seawall construction, filling and land-based ground improvement works, together with runway, taxiways, concourse and associated works. Land-based works on existing airport island involved mainly airfield works, Terminal 2 expansion works, modification and tunnel work for Automated People Mover (APM) and Baggage Handling System (BHS), and preparation work for utilities, with activities include road and drainage works, cable ducting, demolition, piling, and excavation works.
3. General weather condition during monitoring ranged from sunny to rainy. Detailed meteorological conditions can be referred to Table 2.6 of this Report and corresponding Monthly EM&A Reports.
4. QA/ QC requirements as stipulated in the EM&A Manual were carried out during measurement.

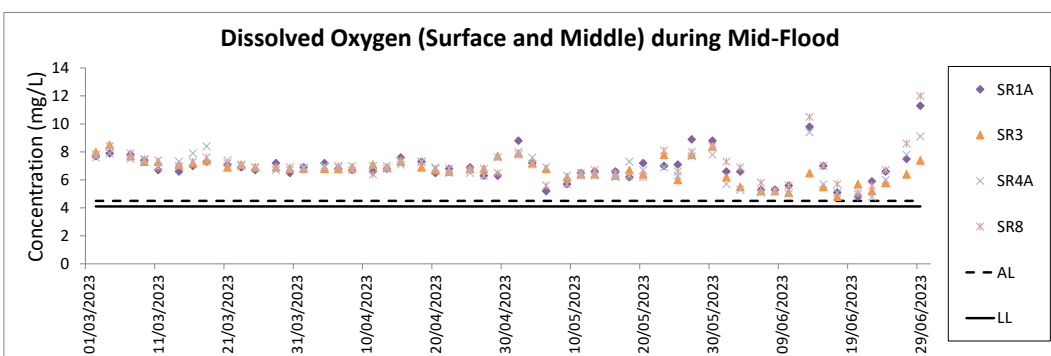
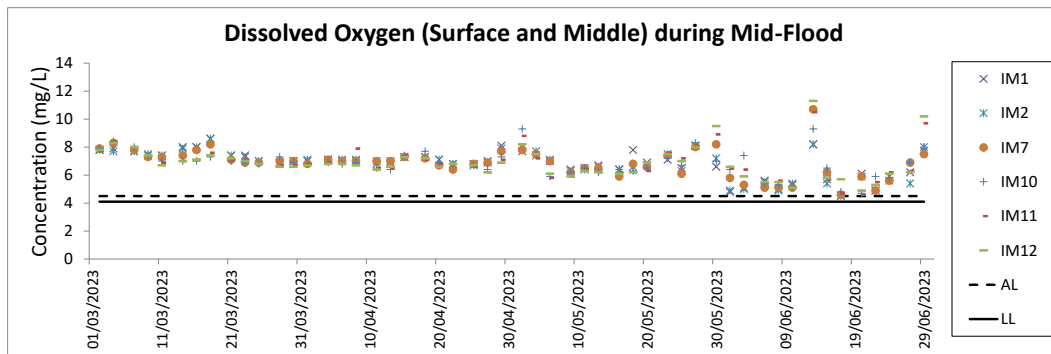
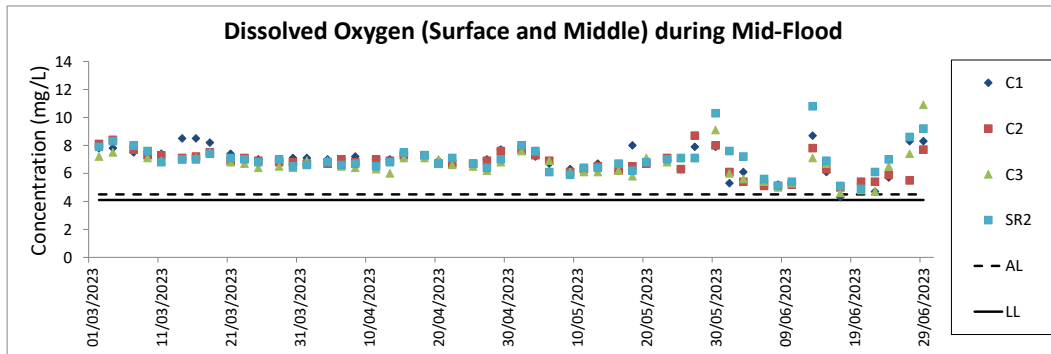
Water Quality Monitoring Results



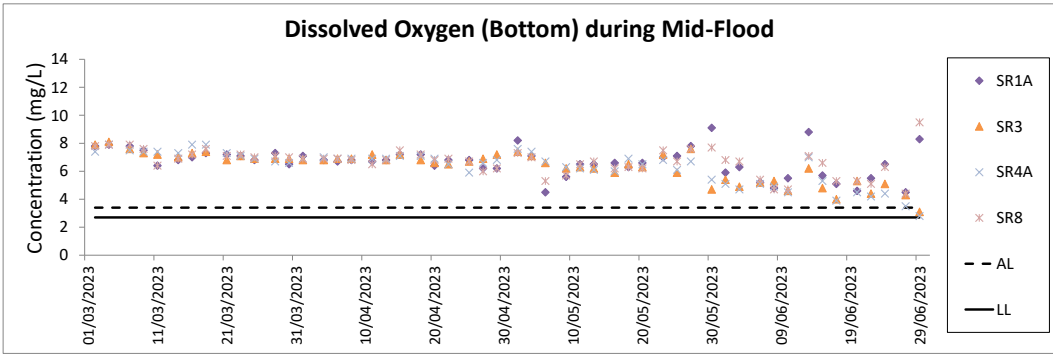
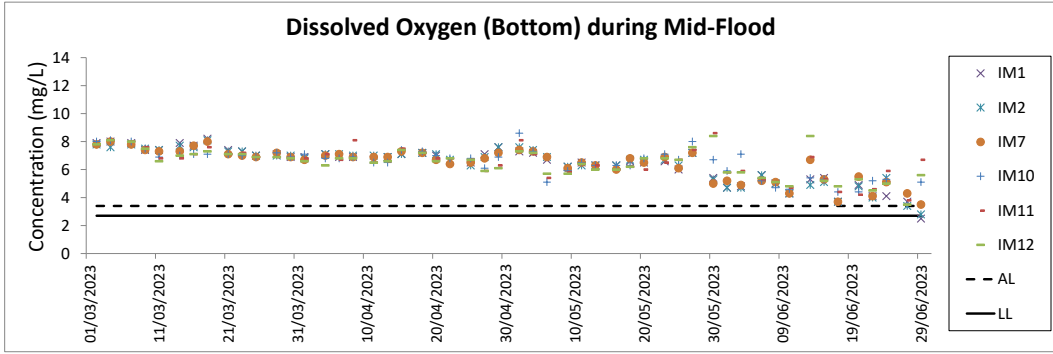
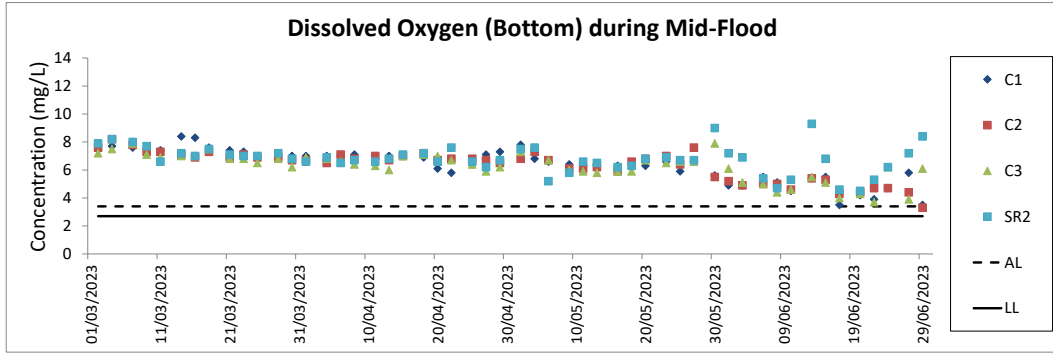
- Notes:
1. The key marine works activities of the Project during monitoring included seawall construction, filling and land-based ground improvement works, together with runway, taxiways, concourse and associated works.
 2. General weather condition during monitoring ranged from sunny to rainy, with sea condition ranged from calm to rough. Detailed meteorological conditions can be referred to Table 2.11 of this Report and corresponding Monthly EM&A Reports.
 3. QA/ QC requirements as stipulated in the EM&A Manual were carried out during measurement.



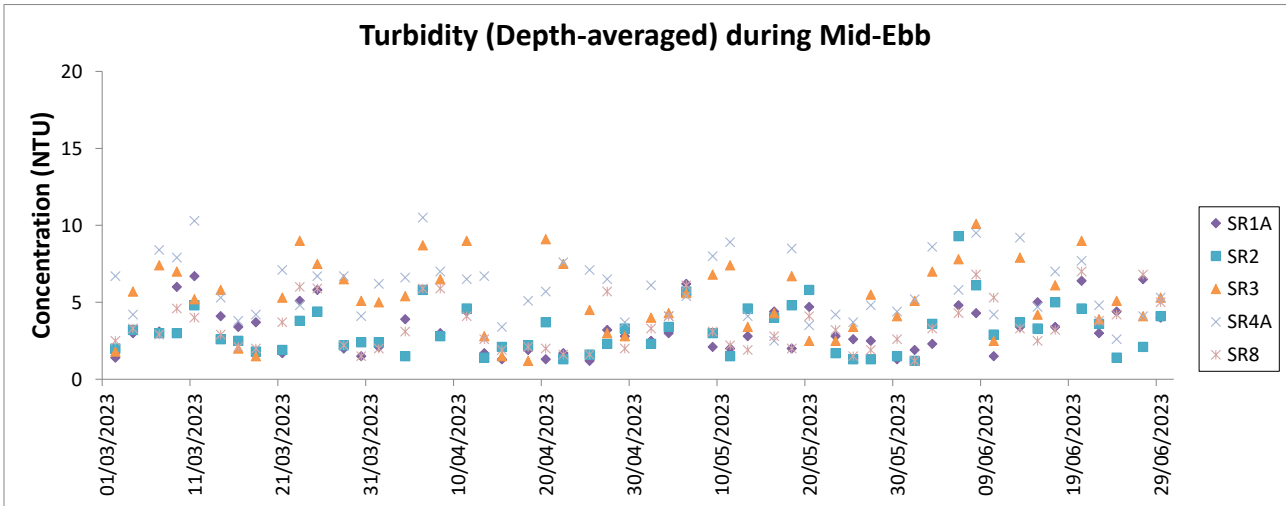
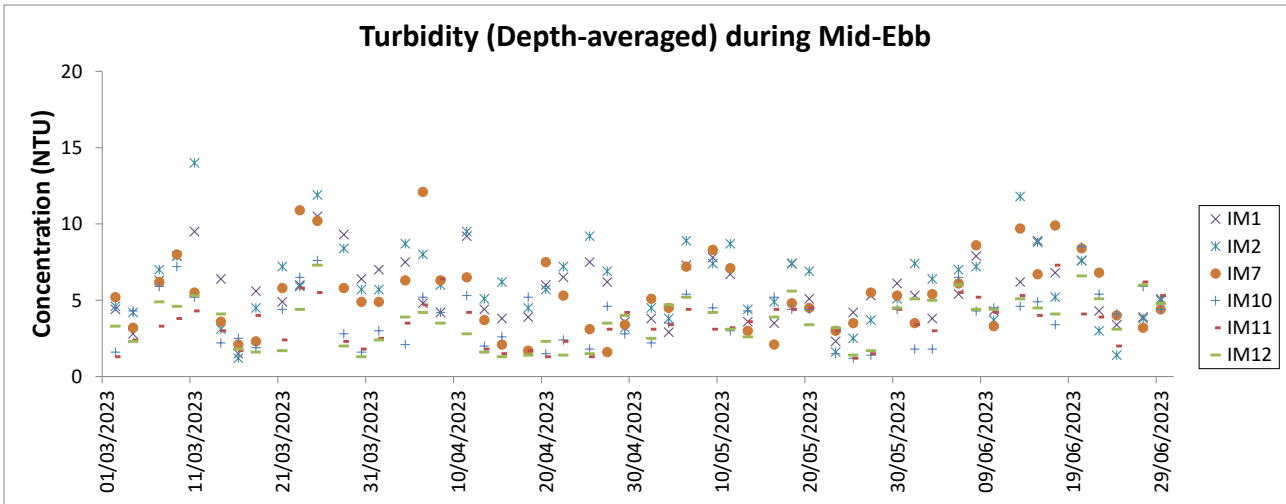
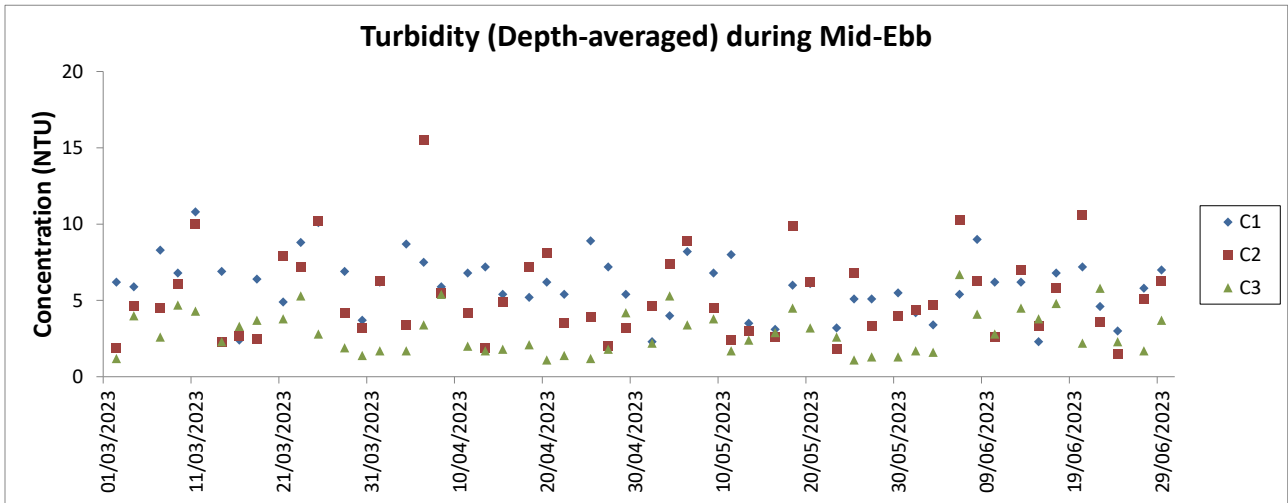
- Notes:
1. The key marine works activities of the Project during monitoring included seawall construction, filling and land-based ground improvement works, together with runway, taxiways, concourse and associated works.
 2. General weather condition during monitoring ranged from sunny to rainy, with sea condition ranged from calm to rough. Detailed meteorological conditions can be referred to Table 2.11 of this Report and corresponding Monthly EM&A Reports.
 3. QA/QC requirements as stipulated in the EM&A Manual were carried out during measurement.



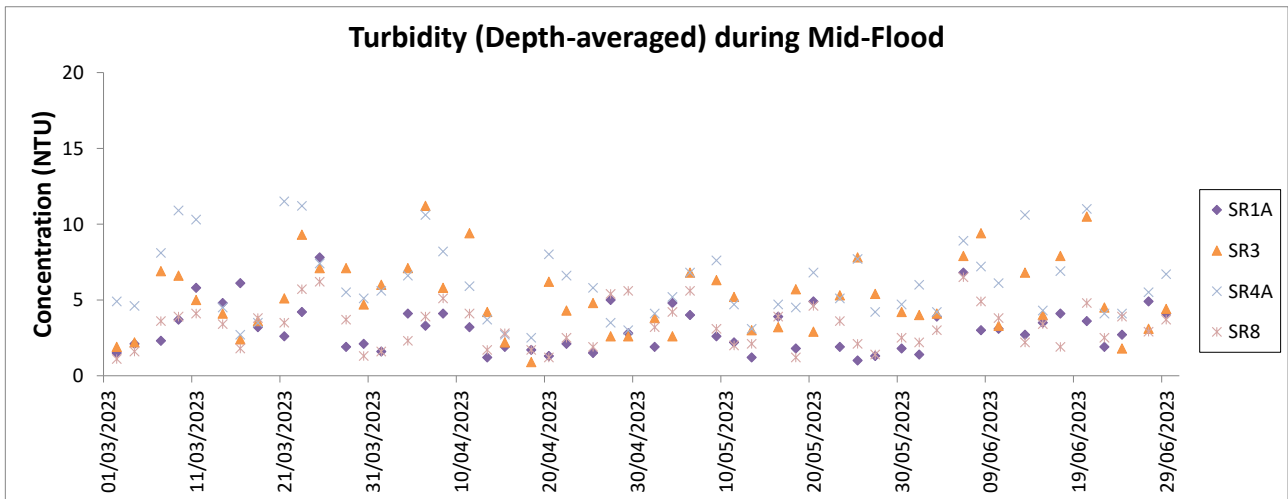
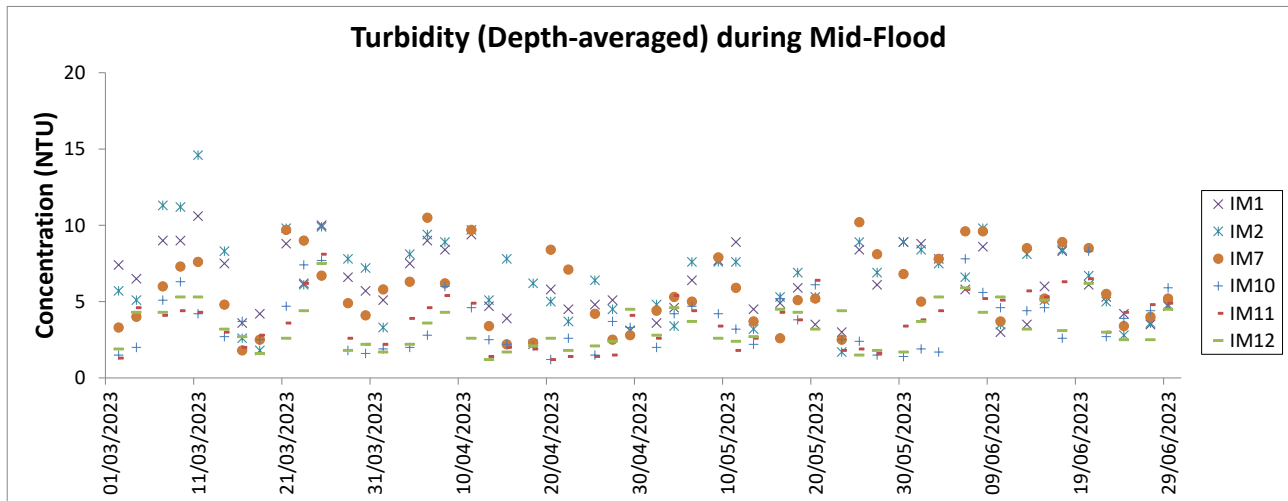
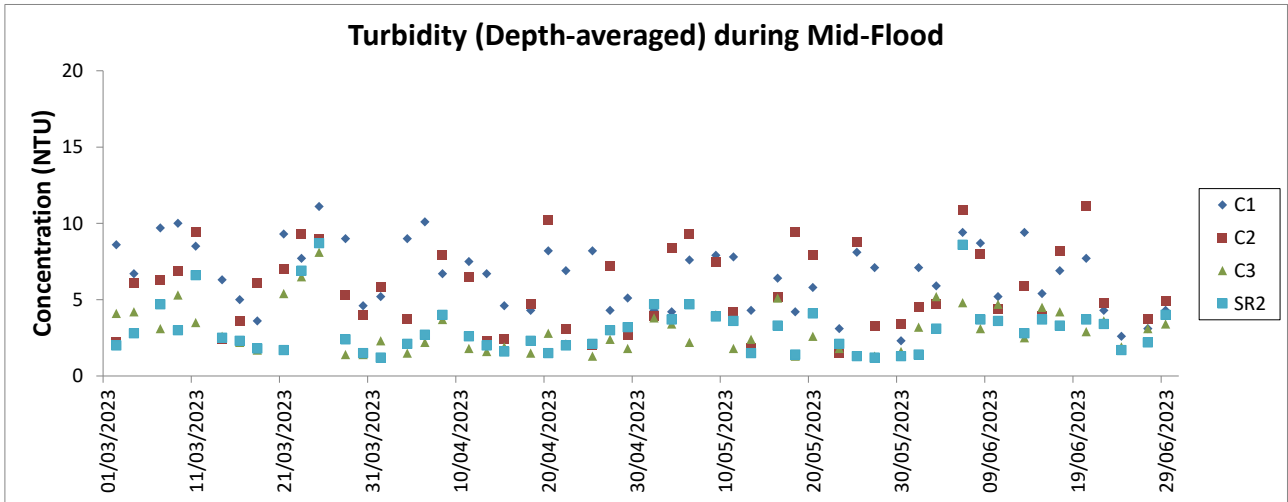
- Notes:
1. The key marine works activities of the Project during monitoring included seawall construction, filling and land-based ground improvement works, together with runway, taxiways, concourse and associated works.
 2. General weather condition during monitoring ranged from sunny to rainy, with sea condition ranged from calm to rough. Detailed meteorological conditions can be referred to Table 2.11 of this Report and corresponding Monthly EM&A Reports.
 3. QA/QC requirements as stipulated in the EM&A Manual were carried out during measurement.



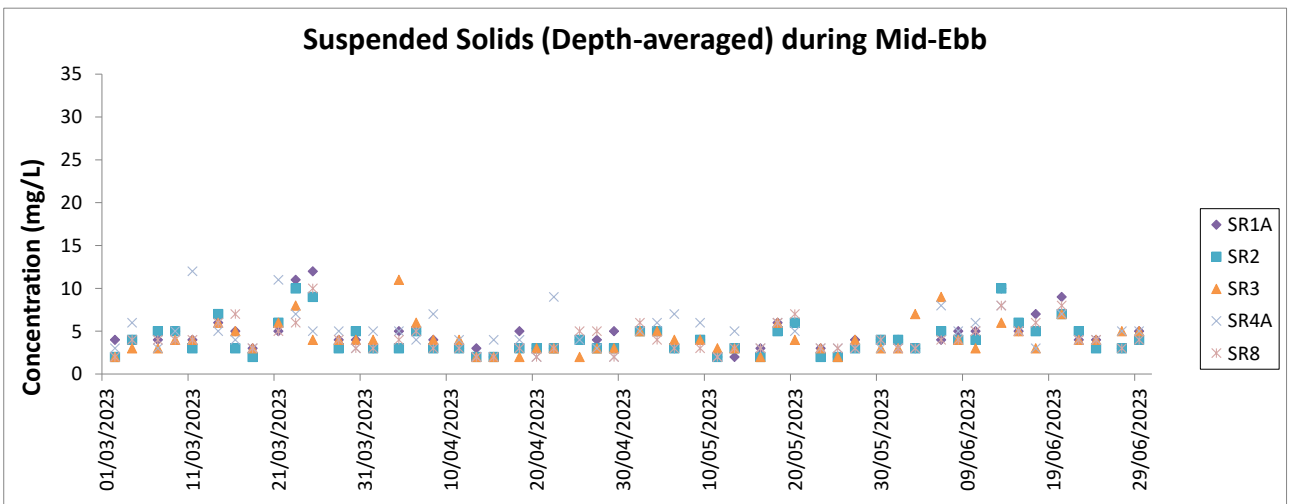
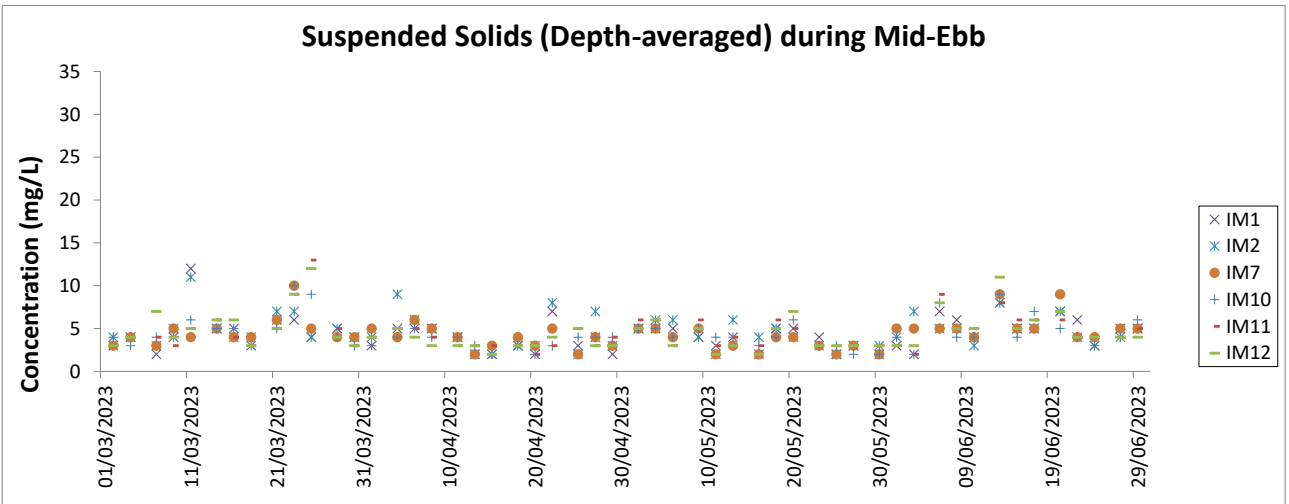
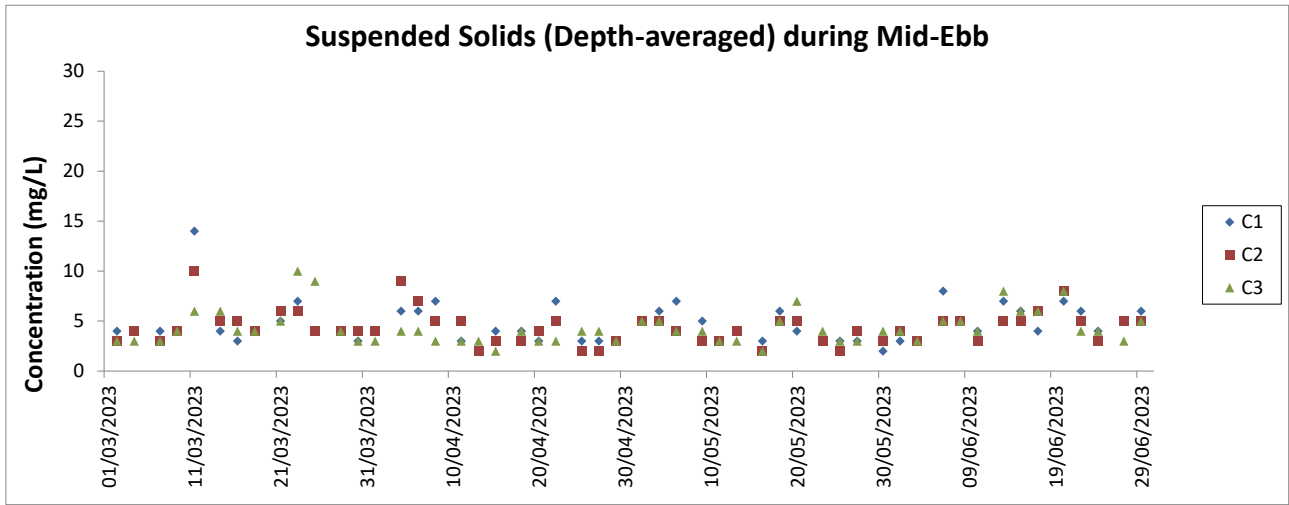
- Notes:
1. The key marine works activities of the Project during monitoring included seawall construction, filling and land-based ground improvement works, together with runway, taxiways, concourse and associated works
 2. General weather condition during monitoring ranged from sunny to rainy, with sea condition ranged from calm to rough. Detailed meteorological conditions can be referred to Table 2.11 of this Report and corresponding Monthly EM&A Reports.
 3. QA/QC requirements as stipulated in the EM&A Manual were carried out during measurement.



- Notes:
1. The Action and Limit Levels can be referred to Table 2.8 of this Report.
 2. The key marine works activities of the Project during monitoring included seawall construction, filling and land-based ground improvement works, together with runway, taxiways, concourse and associated works.
 3. General weather condition during monitoring ranged from sunny to rainy, with sea condition ranged from calm to rough. Detailed meteorological conditions can be referred to Table 2.11 of this Report and corresponding Monthly EM&A Reports.
 4. QA/ QC requirements as stipulated in the EM&A Manual were carried out during measurement.

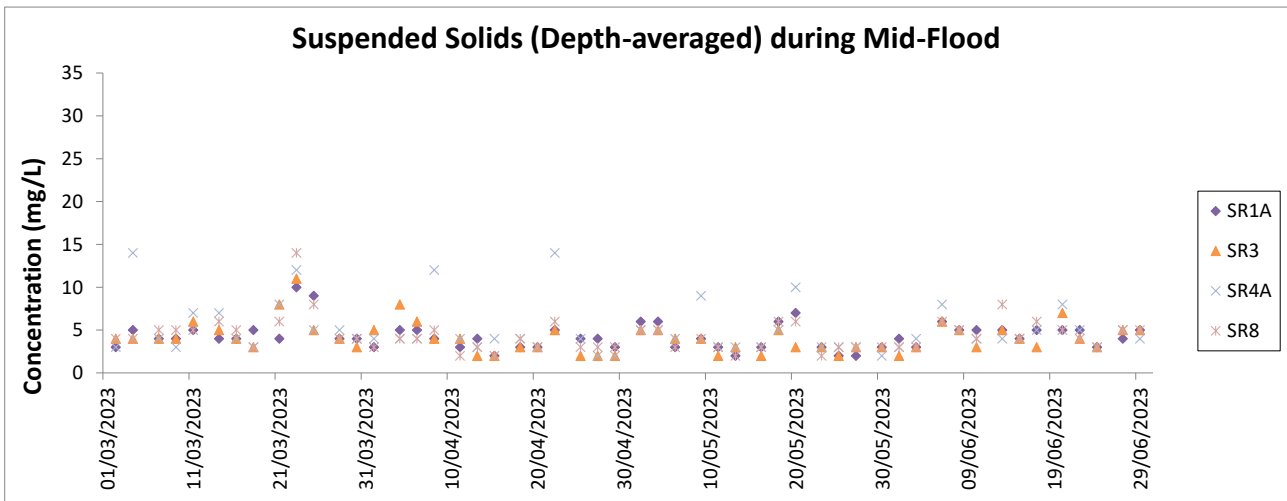
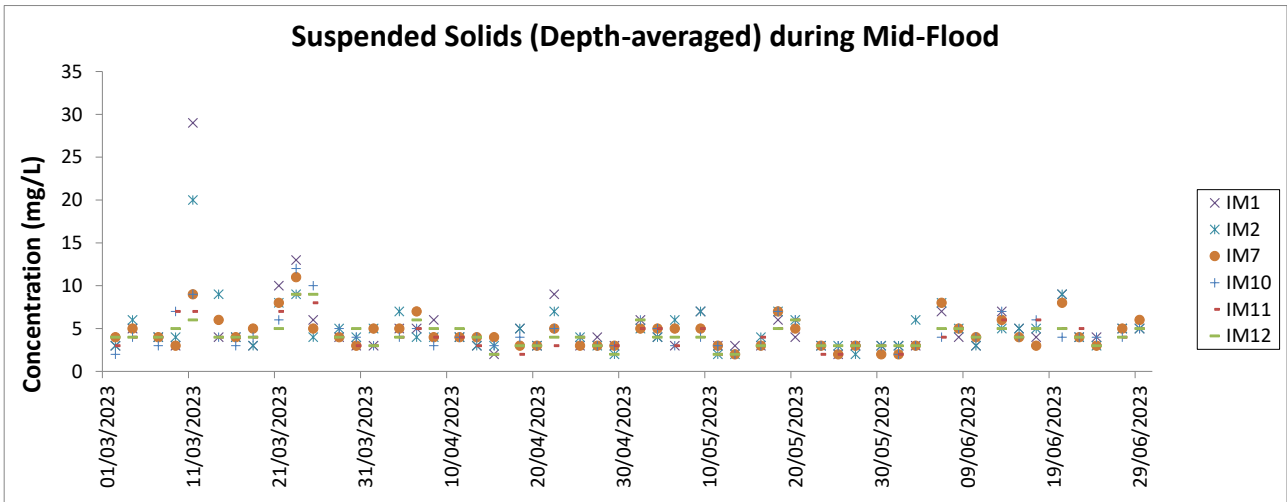
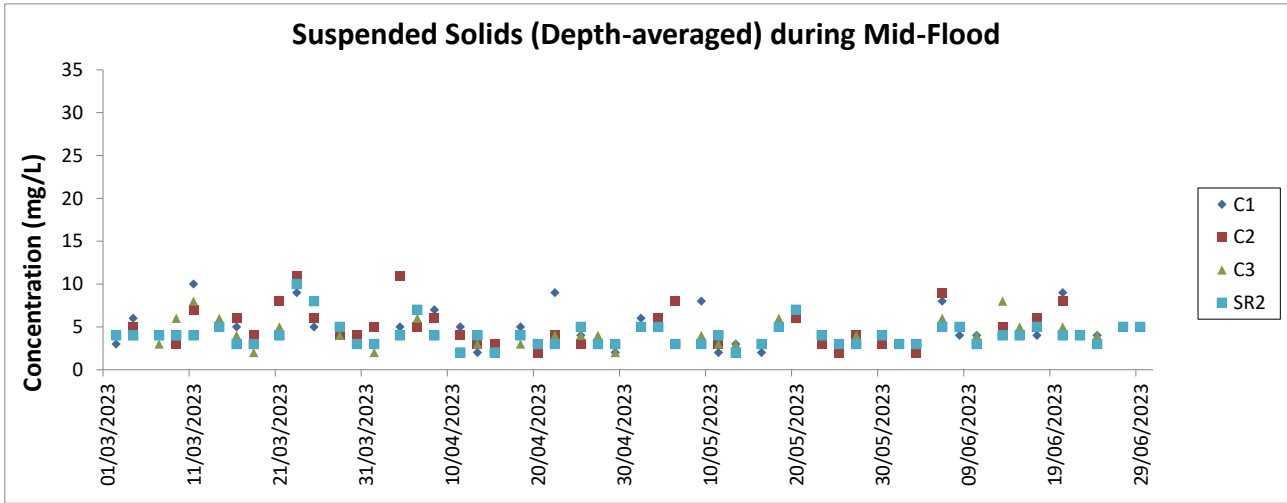


- Notes:
1. The Action and Limit Levels can be referred to Table 2.8 of this Report.
 2. The key marine works activities of the Project during monitoring included seawall construction, filling and land-based ground improvement works, together with runway, taxiways, concourse and associated works.
 3. General weather condition during monitoring ranged from sunny to rainy, with sea condition ranged from calm to rough. Detailed meteorological conditions can be referred to Table 2.11 of this Report and corresponding Monthly EM&A Reports.
 4. QA/ QC requirements as stipulated in the EM&A Manual were carried out during measurement.



Notes:

1. The Action and Limit Levels can be referred to Table 2.8 of this Report.
2. The key marine works activities of the Project during monitoring included seawall construction, filling and land-based ground improvement works, together with runway, taxiways, concourse and associated works.
3. General weather condition during monitoring ranged from sunny to rainy, with sea condition ranged from calm to rough. Detailed meteorological conditions can be referred to Table 2.11 of this Report and corresponding Monthly EM&A Reports.
4. QA/ QC requirements as stipulated in the EM&A Manual were carried out during measurement.



Notes:

1. The Action and Limit Levels can be referred to Table 2.8 of this Report.
2. The key marine works activities of the Project during monitoring included seawall construction, filling and land-based ground improvement works, together with runway, taxiways, concourse and associated works.
3. General weather condition during monitoring ranged from sunny to rainy, with sea condition ranged from calm to rough. Detailed meteorological conditions can be referred to Table 2.11 of this Report and corresponding Monthly EM&A Reports.
4. QA/ QC requirements as stipulated in the EM&A Manual were carried out during measurement.

Chinese White Dolphin Monitoring Results

CWD Small Vessel Line-transect Survey

Survey Effort Data

DATE	AREA	BEAU	KM SEARCHED	SEASON	VESSEL	TYPE	P/S
11-Apr-23	NEL	2	26.630	SPRING	32167	3RS ET	P
11-Apr-23	NEL	3	10.200	SPRING	32166	3RS ET	P
11-Apr-23	NEL	2	7.570	SPRING	32166	3RS ET	S
11-Apr-23	NEL	3	2.300	SPRING	32166	3RS ET	S
12-Apr-23	SWL	1	22.368	SPRING	32166	3RS ET	P
12-Apr-23	SWL	2	30.970	SPRING	32166	3RS ET	P
12-Apr-23	SWL	1	10.270	SPRING	32166	3RS ET	S
12-Apr-23	SWL	2	5.460	SPRING	32166	3RS ET	S
13-Apr-23	WL	2	10.107	SPRING	32166	3RS ET	P
13-Apr-23	WL	3	8.141	SPRING	32166	3RS ET	P
13-Apr-23	WL	2	4.103	SPRING	32166	3RS ET	S
13-Apr-23	WL	3	6.578	SPRING	32166	3RS ET	S
13-Apr-23	AW	3	4.900	SPRING	32166	3RS ET	P
14-Apr-23	SWL	2	44.965	SPRING	32166	3RS ET	P
14-Apr-23	SWL	3	9.510	SPRING	32166	3RS ET	P
14-Apr-23	SWL	2	13.425	SPRING	32166	3RS ET	S
14-Apr-23	SWL	3	2.000	SPRING	32166	3RS ET	S
18-Apr-23	AW	3	4.720	SPRING	32166	3RS ET	P
18-Apr-23	WL	3	19.170	SPRING	32166	3RS ET	P
18-Apr-23	WL	3	10.170	SPRING	32166	3RS ET	S
19-Apr-23	NEL	3	25.790	SPRING	32166	3RS ET	P
19-Apr-23	NEL	4	10.700	SPRING	32166	3RS ET	P
19-Apr-23	NEL	3	8.980	SPRING	32166	3RS ET	S
19-Apr-23	NEL	4	0.900	SPRING	32166	3RS ET	S
20-Apr-23	NWL	2	61.800	SPRING	32166	3RS ET	P
20-Apr-23	NWL	2	13.600	SPRING	32166	3RS ET	S
21-Apr-23	NWL	3	41.400	SPRING	32166	3RS ET	P
21-Apr-23	NWL	4	22.400	SPRING	32166	3RS ET	P
21-Apr-23	NWL	3	9.300	SPRING	32166	3RS ET	S
21-Apr-23	NWL	4	1.900	SPRING	32166	3RS ET	S
4-May-23	WL	2	9.370	SPRING	32166	3RS ET	P
4-May-23	WL	3	5.924	SPRING	32166	3RS ET	P
4-May-23	WL	2	4.130	SPRING	32166	3RS ET	S
4-May-23	WL	3	4.963	SPRING	32166	3RS ET	S
4-May-23	AW	2	4.790	SPRING	32166	3RS ET	P
9-May-23	NEL	2	20.000	SPRING	32166	3RS ET	P
9-May-23	NEL	3	17.600	SPRING	32166	3RS ET	P
9-May-23	NEL	2	6.500	SPRING	32166	3RS ET	S
9-May-23	NEL	3	3.100	SPRING	32166	3RS ET	S
10-May-23	NEL	2	2.640	SPRING	32166	3RS ET	P
10-May-23	NEL	3	32.710	SPRING	32166	3RS ET	P
10-May-23	NEL	4	1.700	SPRING	32166	3RS ET	P
10-May-23	NEL	2	1.980	SPRING	32166	3RS ET	S
10-May-23	NEL	3	8.370	SPRING	32166	3RS ET	S
11-May-23	NWL	2	14.500	SPRING	32166	3RS ET	P

DATE	AREA	BEAU	KM SEARCHED	SEASON	VESSEL	TYPE	P/S
11-May-23	NWL	3	48.500	SPRING	32166	3RS ET	P
11-May-23	NWL	2	2.100	SPRING	32166	3RS ET	S
11-May-23	NWL	3	9.800	SPRING	32166	3RS ET	S
15-May-23	SWL	2	53.890	SPRING	32166	3RS ET	P
15-May-23	SWL	2	16.110	SPRING	32166	3RS ET	S
16-May-23	NWL	2	29.700	SPRING	32166	3RS ET	P
16-May-23	NWL	3	34.100	SPRING	32166	3RS ET	P
16-May-23	NWL	2	6.400	SPRING	32166	3RS ET	S
16-May-23	NWL	3	5.000	SPRING	32166	3RS ET	S
18-May-23	SWL	2	48.250	SPRING	32166	3RS ET	P
18-May-23	SWL	3	4.660	SPRING	32166	3RS ET	P
18-May-23	SWL	2	15.050	SPRING	32166	3RS ET	S
18-May-23	SWL	3	1.060	SPRING	32166	3RS ET	S
23-May-23	AW	3	4.630	SPRING	32166	3RS ET	P
23-May-23	WL	2	9.160	SPRING	32166	3RS ET	P
23-May-23	WL	3	10.106	SPRING	32166	3RS ET	P
23-May-23	WL	2	2.470	SPRING	32166	3RS ET	S
23-May-23	WL	3	7.890	SPRING	32166	3RS ET	S
1-Jun-23	SWL	1	6.440	SUMMER	32166	3RS ET	P
1-Jun-23	SWL	2	34.380	SUMMER	32166	3RS ET	P
1-Jun-23	SWL	3	12.900	SUMMER	32166	3RS ET	P
1-Jun-23	SWL	2	15.380	SUMMER	32166	3RS ET	S
1-Jun-23	SWL	3	1.000	SUMMER	32166	3RS ET	S
2-Jun-23	WL	2	16.884	SUMMER	32166	3RS ET	P
2-Jun-23	WL	2	8.320	SUMMER	32166	3RS ET	S
2-Jun-23	AW	1	4.790	SUMMER	32166	3RS ET	P
5-Jun-23	NWL	2	3.480	SUMMER	32166	3RS ET	P
5-Jun-23	NWL	3	49.220	SUMMER	32166	3RS ET	P
5-Jun-23	NWL	4	10.900	SUMMER	32166	3RS ET	P
5-Jun-23	NWL	3	9.600	SUMMER	32166	3RS ET	S
5-Jun-23	NWL	4	2.500	SUMMER	32166	3RS ET	S
8-Jun-23	SWL	2	0.700	SUMMER	32166	3RS ET	P
8-Jun-23	SWL	3	51.824	SUMMER	32166	3RS ET	P
8-Jun-23	SWL	4	1.013	SUMMER	32166	3RS ET	P
8-Jun-23	SWL	2	1.800	SUMMER	32166	3RS ET	S
8-Jun-23	SWL	3	13.880	SUMMER	32166	3RS ET	S
9-Jun-23	AW	2	4.650	SUMMER	32166	3RS ET	P
9-Jun-23	WL	1	1.930	SUMMER	32166	3RS ET	P
9-Jun-23	WL	2	14.782	SUMMER	32166	3RS ET	P
9-Jun-23	WL	1	2.240	SUMMER	32166	3RS ET	S
9-Jun-23	WL	2	5.948	SUMMER	32166	3RS ET	S
9-Jun-23	WL	3	0.300	SUMMER	32166	3RS ET	S
13-Jun-23	NWL	2	59.180	SUMMER	32166	3RS ET	P
13-Jun-23	NWL	3	3.100	SUMMER	32166	3RS ET	P
13-Jun-23	NWL	2	12.420	SUMMER	32166	3RS ET	S
14-Jun-23	NEL	2	37.440	SUMMER	32166	3RS ET	P
14-Jun-23	NEL	2	10.060	SUMMER	32166	3RS ET	S

DATE	AREA	BEAU	KM SEARCHED	SEASON	VESSEL	TYPE	P/S
20-Jun-23	NEL	2	33.080	SUMMER	32166	3RS ET	P
20-Jun-23	NEL	3	4.120	SUMMER	32166	3RS ET	P
20-Jun-23	NEL	2	10.200	SUMMER	32166	3RS ET	S

CWD Small Vessel Line-transect Survey

Sighting Data

DATE	STG #	TIME	CWD/FP	GP SZ	AREA	BEAU	PSD	EFFORT	TYPE	DEC LAT	DEC LON	SEASON	BOAT ASSOC.	P/S
12-Apr-23	1	1042	FP	5	SWL	2	366	ON	3RS ET	22.1836	113.9358	SPRING	NONE	P
12-Apr-23	2	1047	FP	1	SWL	2	20	ON	3RS ET	22.1789	113.9355	SPRING	NONE	P
12-Apr-23	3	1050	FP	2	SWL	1	205	ON	3RS ET	22.1732	113.9358	SPRING	NONE	P
12-Apr-23	4	1055	FP	4	SWL	1	95	ON	3RS ET	22.1660	113.9362	SPRING	NONE	P
12-Apr-23	5	1100	FP	4	SWL	1	47	ON	3RS ET	22.1591	113.9364	SPRING	NONE	P
12-Apr-23	6	1103	FP	1	SWL	1	78	ON	3RS ET	22.1554	113.9362	SPRING	NONE	P
12-Apr-23	7	1109	FP	2	SWL	1	149	ON	3RS ET	22.1469	113.9315	SPRING	NONE	S
12-Apr-23	8	1119	FP	1	SWL	1	22	ON	3RS ET	22.1586	113.9276	SPRING	NONE	P
12-Apr-23	9	1124	FP	4	SWL	1	54	ON	3RS ET	22.1661	113.9276	SPRING	NONE	P
12-Apr-23	10	1218	FP	1	SWL	1	157	ON	3RS ET	22.1444	113.9080	SPRING	NONE	P
12-Apr-23	11	1226	FP	4	SWL	1	205	ON	3RS ET	22.1563	113.9008	SPRING	NONE	S
12-Apr-23	12	1311	FP	3	SWL	1	53	ON	3RS ET	22.1824	113.8971	SPRING	NONE	P
13-Apr-23	1	1057	CWD	10	WL	3	623	ON	3RS ET	22.2416	113.8409	SPRING	PURSE SEINER	P
13-Apr-23	2	1127	CWD	9	WL	2	11	ON	3RS ET	22.2324	113.8294	SPRING	PURSE SEINER	P
13-Apr-23	3	1146	CWD	2	WL	2	268	ON	3RS ET	22.2237	113.8286	SPRING	NONE	P
13-Apr-23	4	1156	CWD	3	WL	3	11	ON	3RS ET	22.2188	113.8195	SPRING	NONE	S
13-Apr-23	5	1213	CWD	8	WL	3	355	ON	3RS ET	22.2148	113.8322	SPRING	NONE	P
14-Apr-23	1	1400	FP	1	SWL	2	9	ON	3RS ET	22.1593	113.8730	SPRING	NONE	S
18-Apr-23	1	1049	CWD	7	WL	3	26	ON	3RS ET	22.2459	113.8496	SPRING	NONE	S
18-Apr-23	2	1148	CWD	3	WL	3	296	ON	3RS ET	22.2141	113.8340	SPRING	NONE	P
18-Apr-23	3	1226	CWD	4	WL	3	282	ON	3RS ET	22.1962	113.8412	SPRING	NONE	P
4-May-23	1	1054	CWD	1	WL	2	409	ON	3RS ET	22.2451	113.8491	SPRING	NONE	S
4-May-23	2	1117	CWD	7	WL	3	130	ON	3RS ET	22.2324	113.8242	SPRING	NONE	S
4-May-23	3	1138	CWD	2	WL	3	179	ON	3RS ET	22.2321	113.8278	SPRING	NONE	P
4-May-23	4	1158	CWD	3	WL	3	335	ON	3RS ET	22.2241	113.8307	SPRING	NONE	P
4-May-23	5	1219	CWD	3	WL	3	163	ON	3RS ET	22.2143	113.8218	SPRING	NONE	P
4-May-23	6	1251	CWD	4	WL	3	212	ON	3RS ET	22.1968	113.8287	SPRING	NONE	S
4-May-23	7	1302	CWD	5	WL	3	379	ON	3RS ET	22.1962	113.8402	SPRING	NONE	P
15-May-23	1	1115	FP	2	SWL	2	44	ON	3RS ET	22.1744	113.9284	SPRING	NONE	P
18-May-23	1	1402	CWD	2	SWL	2	299	ON	3RS ET	22.1987	113.8785	SPRING	PURSE SEINER	P
18-May-23	2	1512	CWD	1	SWL	2	366	ON	3RS ET	22.1993	113.8596	SPRING	NONE	S

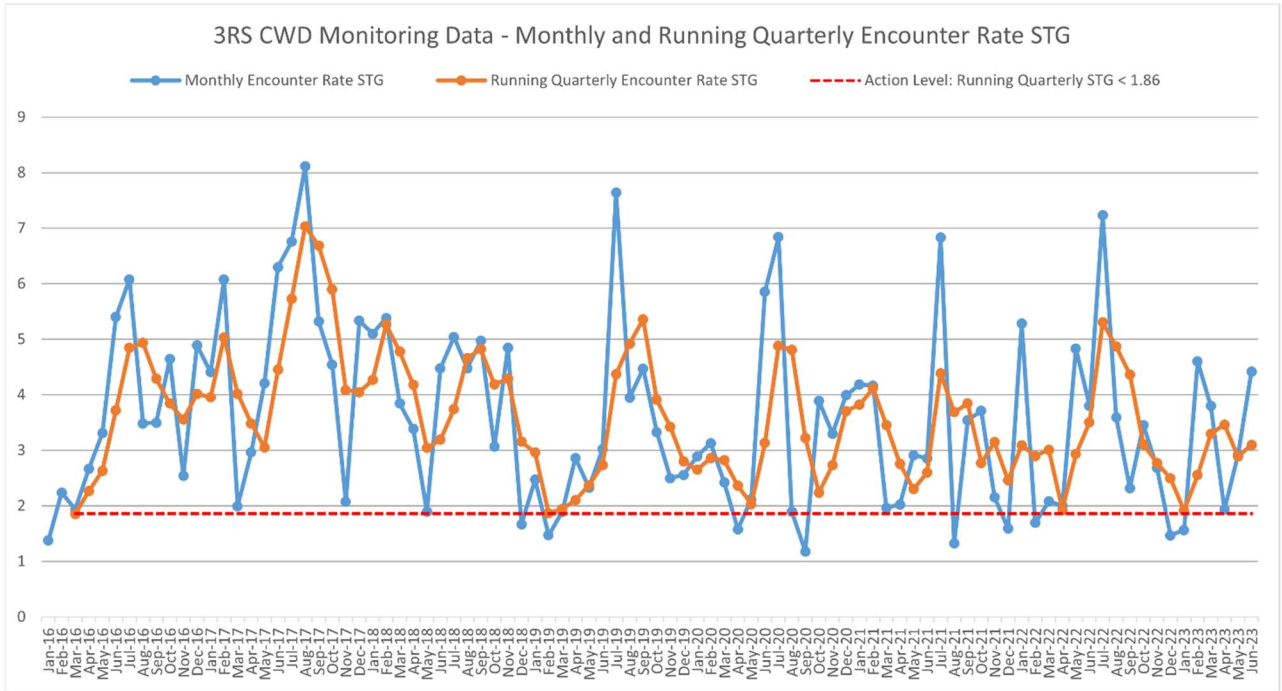
DATE	STG #	TIME	CWD/FP	GP SZ	AREA	BEAU	PSD	EFFORT	TYPE	DEC LAT	DEC LON	SEASON	BOAT ASSOC.	P/S
23-May-23	1	1116	CWD	4	WL	3	162	ON	3RS ET	22.2227	113.8306	SPRING	NONE	P
23-May-23	2	1145	CWD	1	WL	3	59	ON	3RS ET	22.2144	113.8338	SPRING	NONE	P
23-May-23	3	1216	CWD	3	WL	3	31	ON	3RS ET	22.1960	113.8410	SPRING	NONE	P
23-May-23	4	1231	CWD	5	WL	3	200	ON	3RS ET	22.1935	113.8425	SPRING	NONE	S
1-Jun-23	1	1318	FP	4	SWL	2	385	ON	3RS ET	22.1541	113.8882	SUMMER	NONE	P
1-Jun-23	2	1505	CWD	3	SWL	2	79	ON	3RS ET	22.1936	113.8492	SUMMER	NONE	P
2-Jun-23	1	1054	CWD	3	WL	2	591	ON	3RS ET	22.2417	113.8469	SUMMER	NONE	P
2-Jun-23	2	1112	CWD	1	WL	2	698	ON	3RS ET	22.2410	113.8323	SUMMER	NONE	P
2-Jun-23	3	1130	CWD	9	WL	2	30	ON	3RS ET	22.2327	113.8374	SUMMER	NONE	P
2-Jun-23	4	1153	CWD	1	WL	2	336	ON	3RS ET	22.2247	113.8372	SUMMER	NONE	S
2-Jun-23	5	1206	CWD	4	WL	2	100	ON	3RS ET	22.2237	113.8276	SUMMER	NONE	P
2-Jun-23	6	1217	CWD	4	WL	2	161	ON	3RS ET	22.2184	113.8204	SUMMER	NONE	S
2-Jun-23	7	1250	CWD	1	WL	2	1085	ON	3RS ET	22.2053	113.8213	SUMMER	NONE	P
2-Jun-23	8	1259	CWD	5	WL	2	153	ON	3RS ET	22.1964	113.8373	SUMMER	NONE	P
2-Jun-23	9	1332	CWD	2	SWL	2	N/A	OFF	3RS ET	22.1932	113.8510	SUMMER	PURSE SEINER	N/A
8-Jun-23	1	1446	CWD	1	SWL	3	223	ON	3RS ET	22.1958	113.8591	SUMMER	NONE	P
8-Jun-23	2	1457	CWD	4	SWL	3	321	ON	3RS ET	22.1892	113.8596	SUMMER	NONE	P
9-Jun-23	1	1058	CWD	2	WL	1	191	ON	3RS ET	22.2579	113.8376	SUMMER	NONE	S
9-Jun-23	2	1137	CWD	3	WL	2	105	ON	3RS ET	22.2325	113.8282	SUMMER	PURSE SEINER	P
9-Jun-23	3	1154	CWD	1	WL	2	580	ON	3RS ET	22.2291	113.8379	SUMMER	NONE	S
9-Jun-23	4	1203	CWD	3	WL	2	1060	ON	3RS ET	22.2243	113.8275	SUMMER	NONE	P
9-Jun-23	5	1253	CWD	6	WL	2	280	ON	3RS ET	22.2062	113.8240	SUMMER	NONE	P
9-Jun-23	6	1315	CWD	4	WL	2	100	ON	3RS ET	22.1981	113.8271	SUMMER	NONE	S
9-Jun-23	7	1328	CWD	1	WL	2	22	ON	3RS ET	22.1879	113.8407	SUMMER	NONE	P
13-Jun-23	1	1128	CWD	1	NWL	2	137	ON	3RS ET	22.3690	113.8779	SUMMER	NONE	P

Abbreviations: STG# = Sighting Number; GP SZ = Group Size; BEAU = Beaufort Sea State; PSD = Perpendicular Distance (in metres); N/A = Not Applicable; DEC LAT = Latitude (WGS84 in Decimal), DEC LON = Longitude (WGS84 in Decimal); BOAT ASSOC. = Fishing Boat Association; P/S = Primary Transect / Secondary Transect.

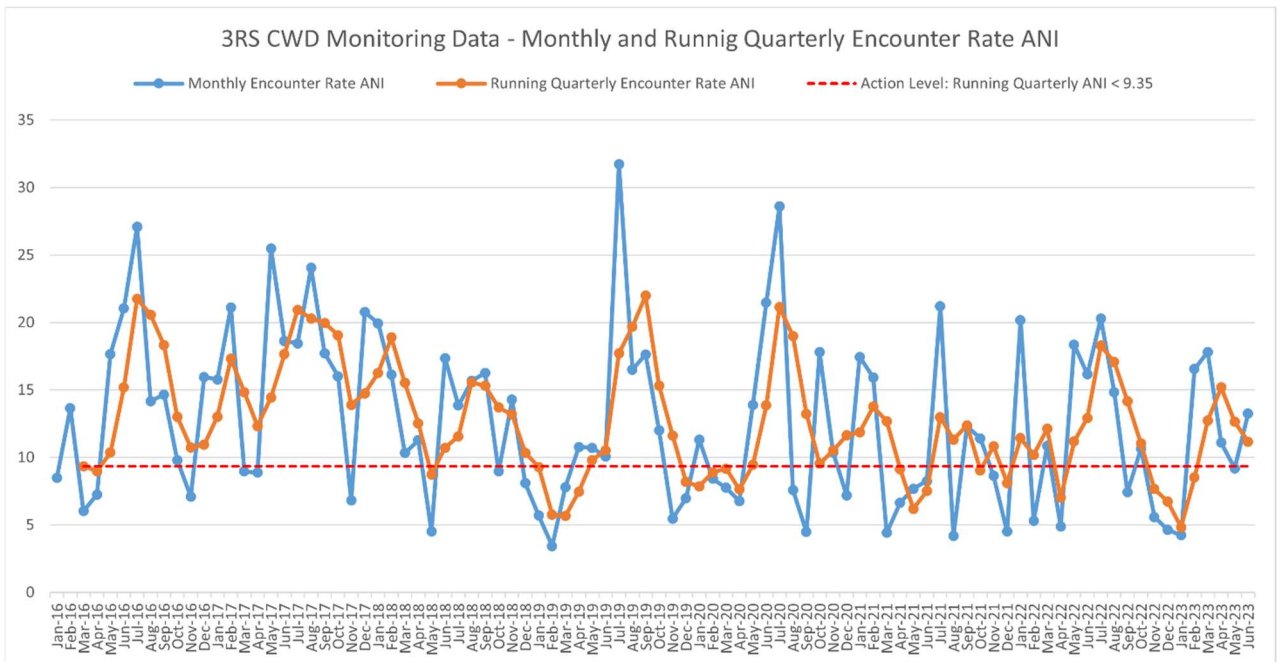
Sighting data of finless porpoise (FP) are presented for reference only. No relevant figure or text will be mentioned in the quarterly EM&A report. All FP sightings are excluded in calculation.

Graphical Presentation of Monthly and Running Quarterly Encounter Rates for the entire monitoring period

Encounter Rate STG:



















Encounter Rate ANI:

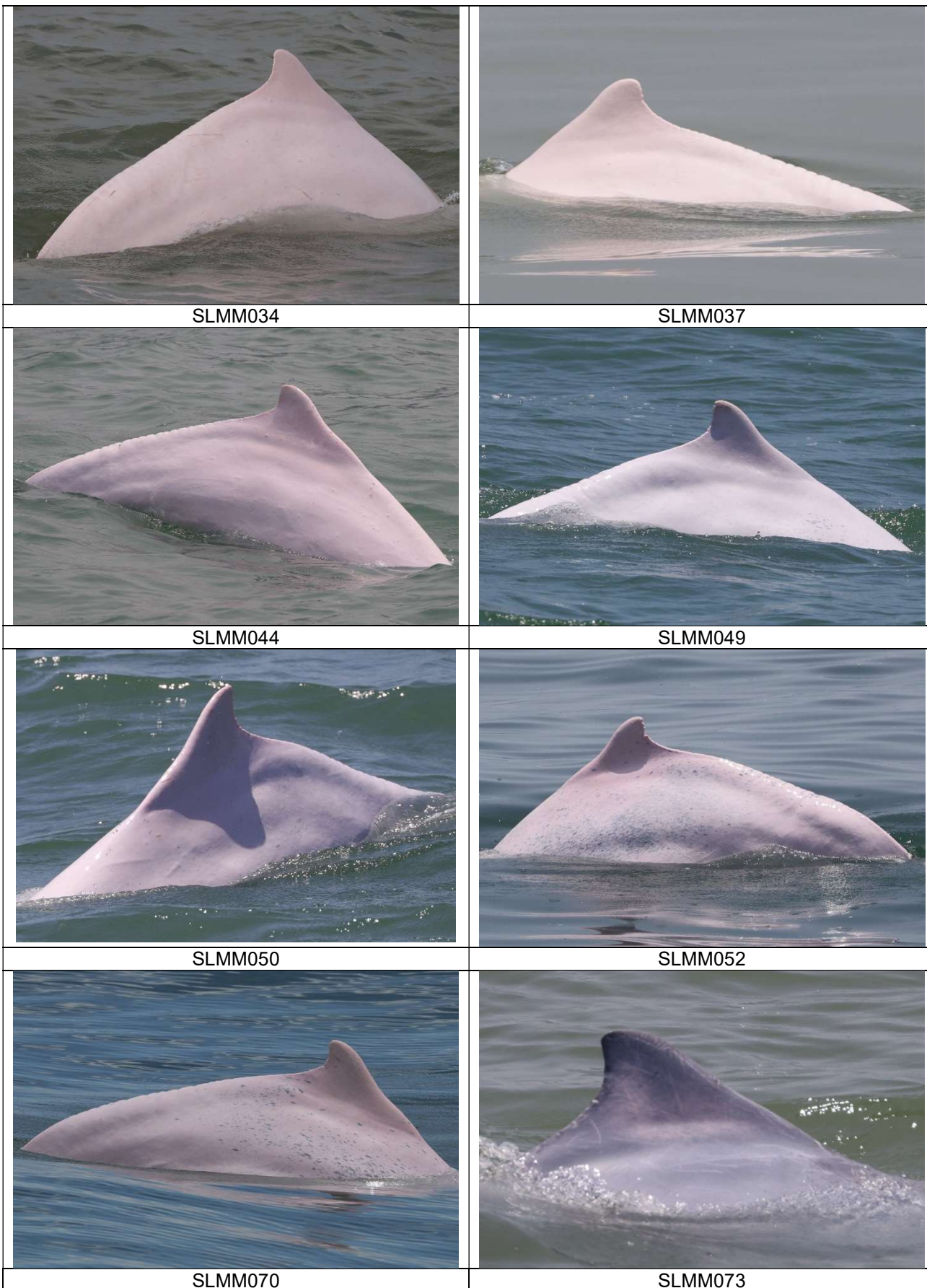


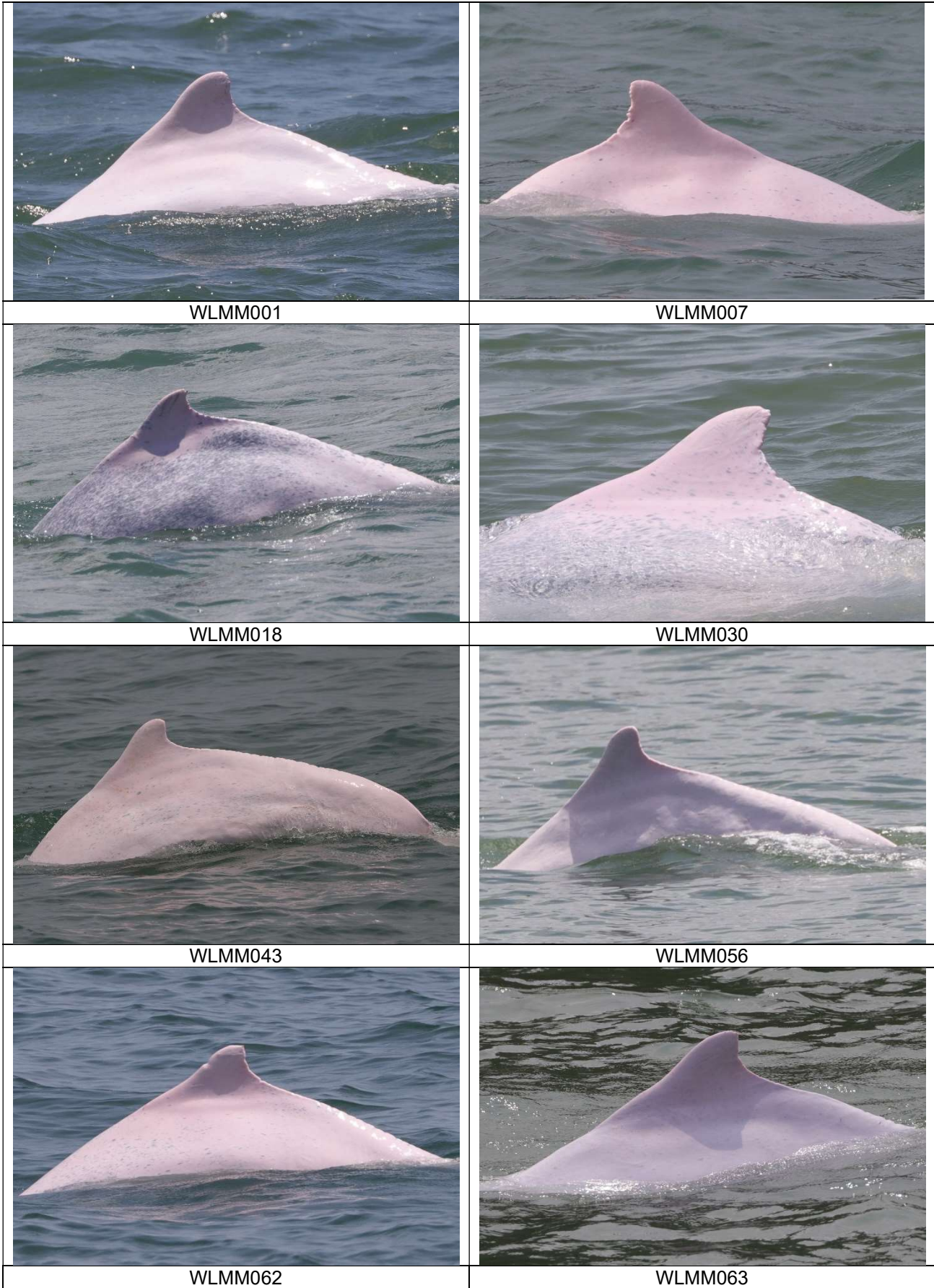
CWD Small Vessel Line-transect Survey

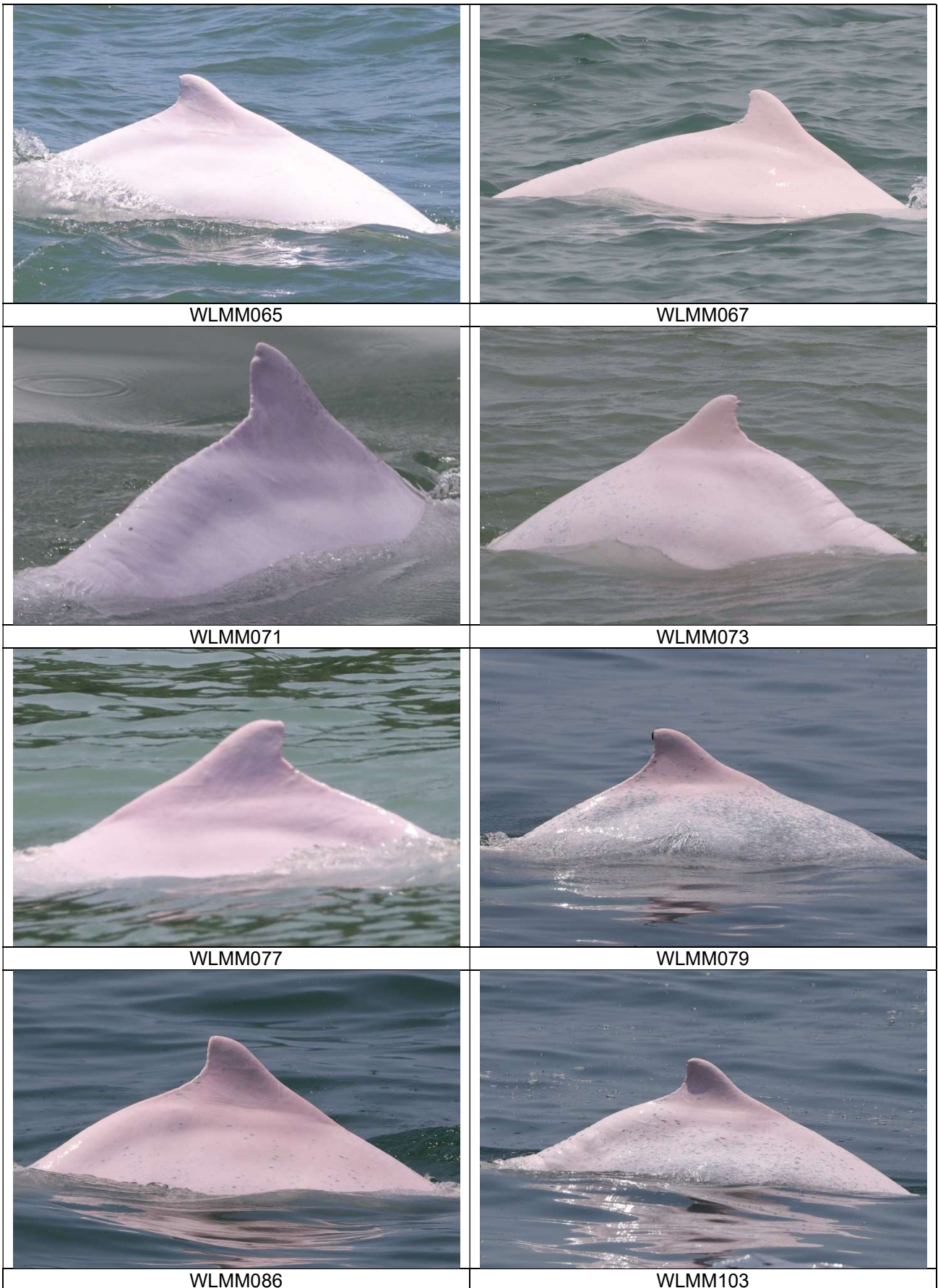
Photo Identification

	
NLMM001	NLMM013
	
NLMM020	NLMM021
	
NLMM027	NLMM040
	
NLMM063	SLMM003

	
SLMM007	SLMM010
	
SLMM014	SLMM023
	
SLMM025	SLMM027
	
SLMM029	SLMM031










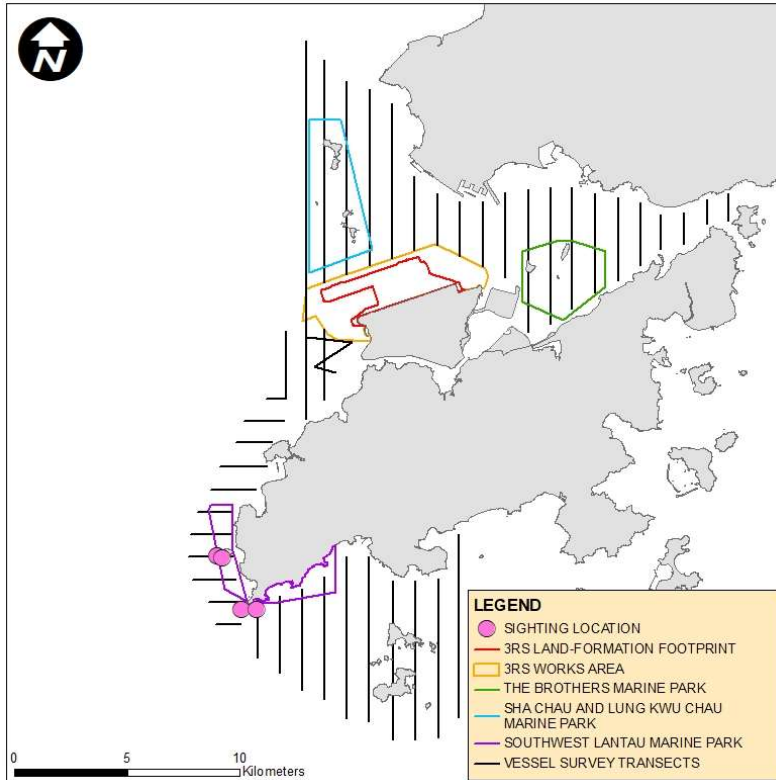
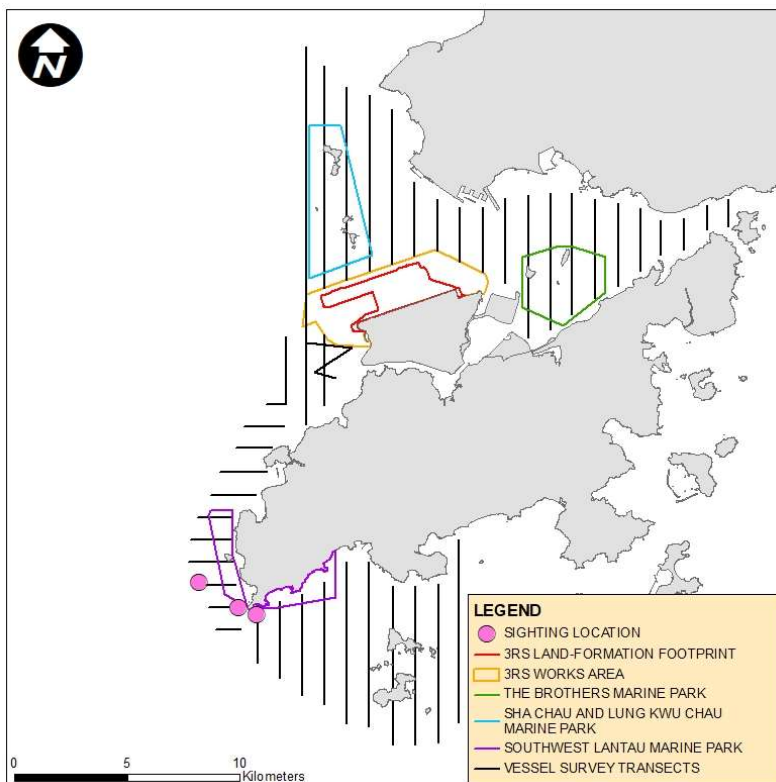
	
WLMM188	

Photo Identification – Re-sighting Locations

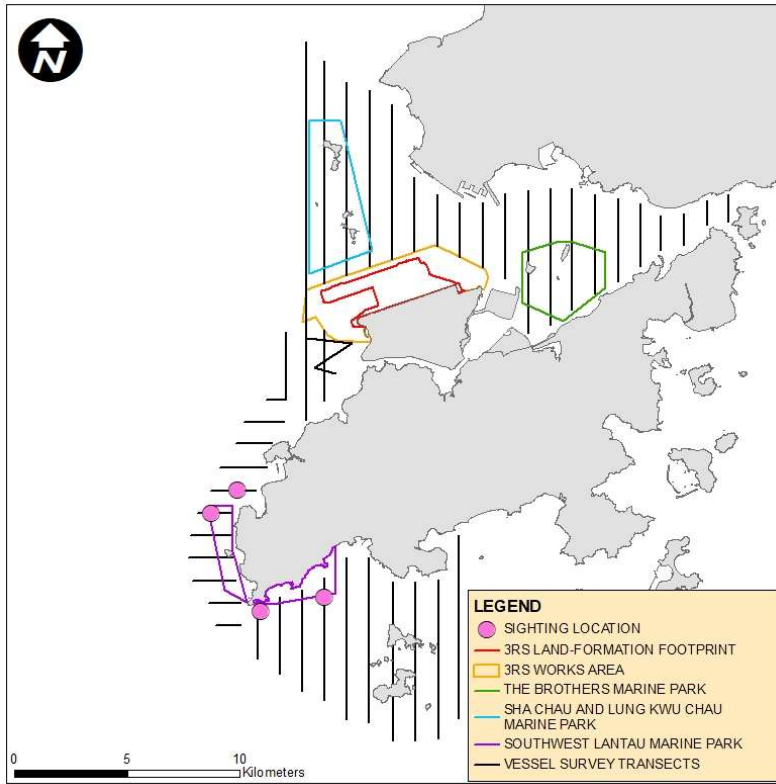
SLMM003



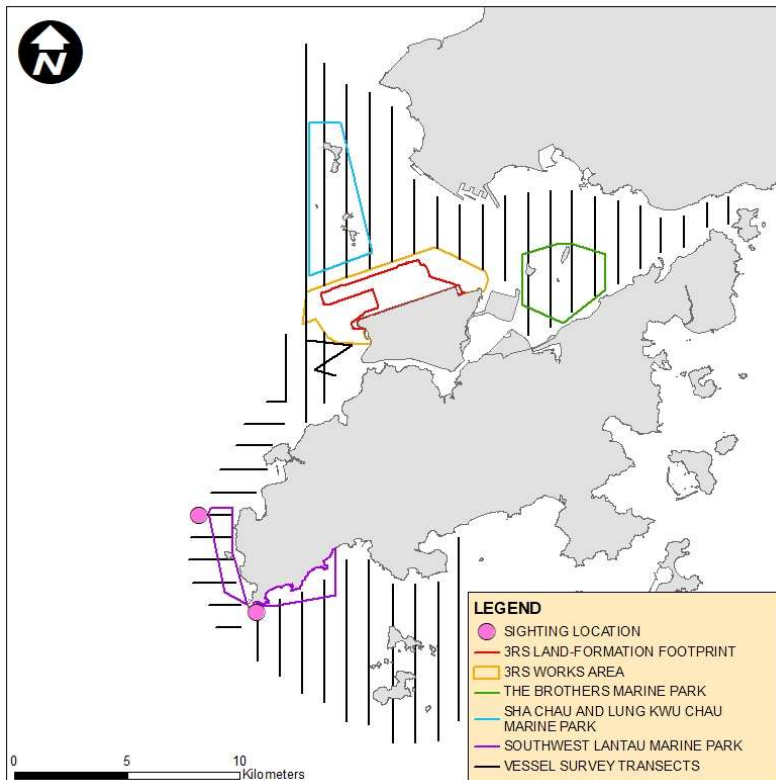
SLMM010



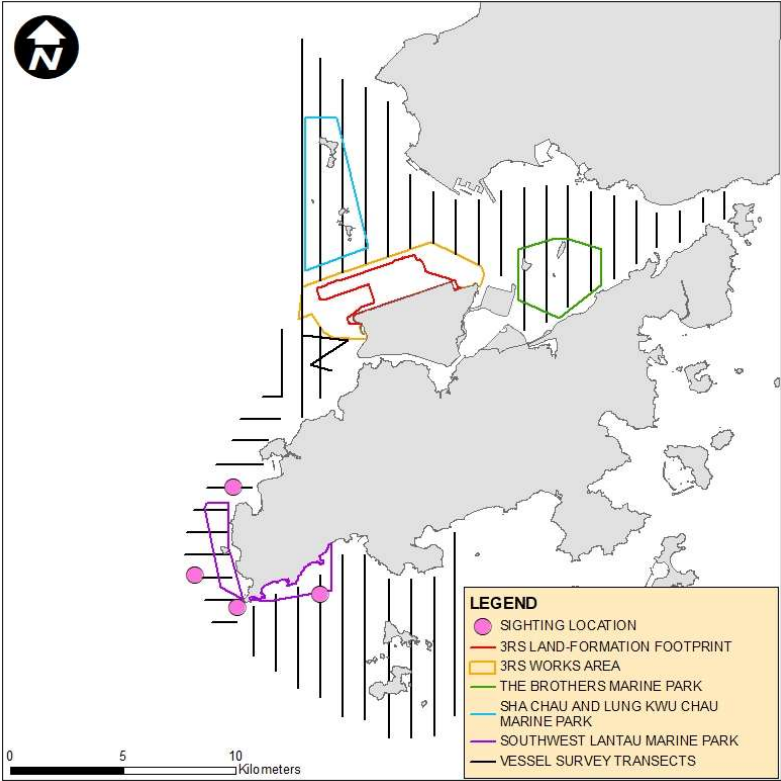
SLMM037



WLMM007



WLMM114



CWD Land-based Theodolite Tracking**CWD Groups by Survey Date**

Date	Station	Start Time	End Time	Duration	Beaufort Range	Visibility	No. of Focal Follow Dolphin Groups Tracked	Dolphin Group Size Range
24/Apr/23	Lung Kwu Chau	8:51	14:51	6:00	2-3	2-3	0	0
25/Apr/23	Sha Chau	10:45	16:45	6:00	3	4	0	0
24/May/23	Lung Kwu Chau	9:24	15:24	6:00	3	3	0	0
25/May/23	Sha Chau	10:48	16:48	6:00	3	1	0	0
19/Jun/23	Lung Kwu Chau	8:54	14:54	6:00	2	1	1	1
26/Jun/23	Sha Chau	10:40	16:40	6:00	2	1	0	0

Visibility: 1=Excellent, 2=Good, 3=Fair, 4=Poor